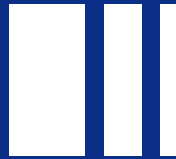


Our Fleet



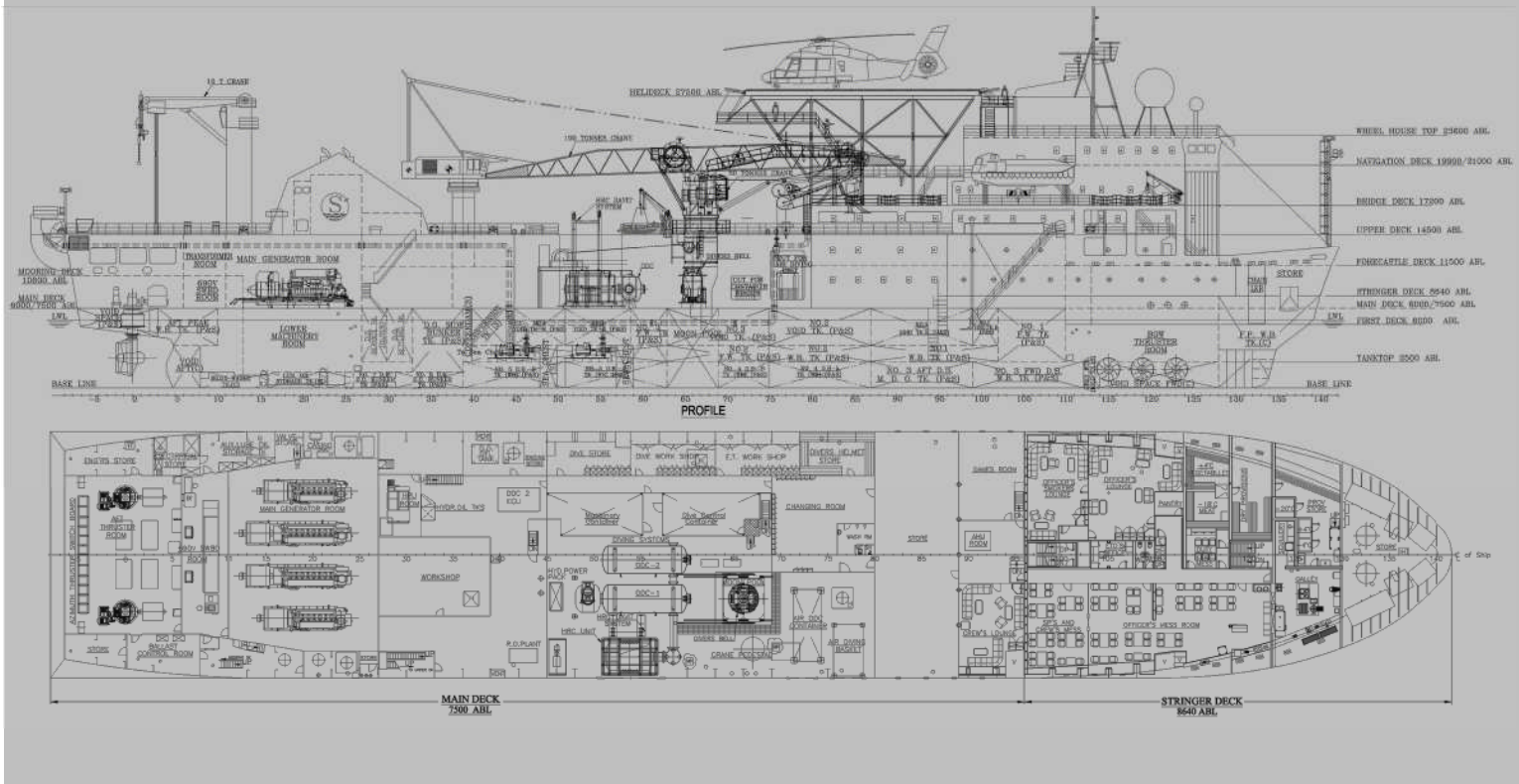
# SEAMEC PRINCESS

[ A diving support vessel



SEAMEC LIMITED

MMG™



The Seamec Princess is a dive support vessel, capable of working throughout the year in severe sea and weather conditions.

## Capabilities

Built in 1984, the vessel is designed, constructed and certified for worldwide off-shore operations. The Seamec Princess provides services, which include S.B.M maintenance removal and installations, Platform, Riser and Pipeline repairs, inspection & survey, Subsea constructions, Anode installations, ROV & Grouting operations and Hook up jobs/ commissioning.

## Diving System

12 Man Saturation diving system certified for 300 MSW. Bell handling system. Gas Mizer reclaim system. 3 Man Diving Bell with moonpool launching arrangement.. HRC with launch & recovery system on Stbd side of the vessel. Kelly Storage capacity is Gas 5,445 m<sup>3</sup>, Air 808 m<sup>3</sup>, Treatment Mix 396 m<sup>3</sup>.

## Communication

GMDSS Compliant equipments available onboard.

## Dynamic Positioning System

The vessel is fitted with a fully redundant Converteam Duplex Dynamic Positioning system. There is one (Sonardyne, Ranger PRO2 ) hydroacoustic transducer, two satellite positioning systems (DGPS), one vertical taut wire reference systems and a Laser rader system.

## Accommodation

The accommodation is fully air conditioned for a total compliment of 117 persons, comprising:  
 21 x Single berth cabins  
 32 x Double berth cabins  
 08 x Four bed cabins  
 Additional 02 bed Hospital.

## Cranage

The vessel is fitted with One 95.7 T Pedestal Crane, 95.7 T @ 7.6 M & 20T @ 30M. One 50T Knuckle Boom Crane @ 15M. One 10T man riding Pedestal Crane.

# Specifications

## Principle dimensions

Length overall.....123.4 m  
 Length Between pp.....111.84 m  
 Breadth Moulded.....21.0 m

## Operating draft

Summer draft.....6.455 m

Dead weight.....4364.62 tonnes

## Tonnage

Gross Tonnage.....8709 tonnes  
 Net Tonnage.....2613 tonnes

## Cranage

### Main lifting facilities

- 1 x 95.7 ton Pedestal Crane @ 7.6 M on Stbd side
- 1 x 50 ton Knuckle Boom Crane @ 15 M on Stbd side

### Additional lifting facilities

- 1 x 10 ton Pedestal Crane (Man Riding) on Port side @ 18 M

## Deck space

800 sq.m

Working moonpool 3.6 x 3.6 m

**Deck load** 10 T/m<sup>2</sup> fwd of Fr#11  
 1 T/m<sup>2</sup> Aft of Fr#11

Max overall 1,500 T

## Capacities

- Marine diesel oil 840 m<sup>3</sup>
- Fresh water 646 m<sup>3</sup>

## DP system

Converteam Duplex system

## Reference Systems

- 1 x HPR (Sonardyne, Ranger PRO2)
- 2 x DGPS ( Fugro Seastar 8200 HP +3510LR)
- 1 x Taut wire (Converteam TW901)
- 1 x Laser Rader System (CyScan MK III)

## Environmental Regulatory

Number 99/99/98

## Power Plant

- 2 x Wartsila 8R32 (3240 kW each)
- 2 x Wartsila 6R32 (2430 kW each)

**Total generated power 11,340 kW**

## Propulsion

### Bow

- 3 x Ulstein (375 TV) of 1275 kW each with CPP.

### Stern

- 2 x Aquamaster US 3001 of 2400 kW each with FPP.

## Endurance

### Fuel consumption (typical)

- In port 3.5 m<sup>3</sup>
- Transit 20 m<sup>3</sup>
- DP approx 12 m<sup>3</sup>

### Fresh water making capacity

25 M<sup>3</sup> / day (RO Plant)

## Vessel speed

- Maximum speed 10 knots
- Economic Transit Speed 7 knots

## Helideck

Bell 212 or similar

## Diving system

- Depth rating 300 MSW
- No in sat 12
- No of bells 1 x 3 man
- Bell volume 5 m<sup>3</sup>
- System volume 55 m<sup>3</sup>
- Gas storage 5,445 m<sup>3</sup>
- Reclaim system connected to 3 man bell.

## Flag

Indian

## Call sign

AUNJ

## Classification

DNV - +1A1 HELDK-S EO DYNPO-SAUTR  
 IRS -SUL, IY, SYJ, HELDK, DP (2)

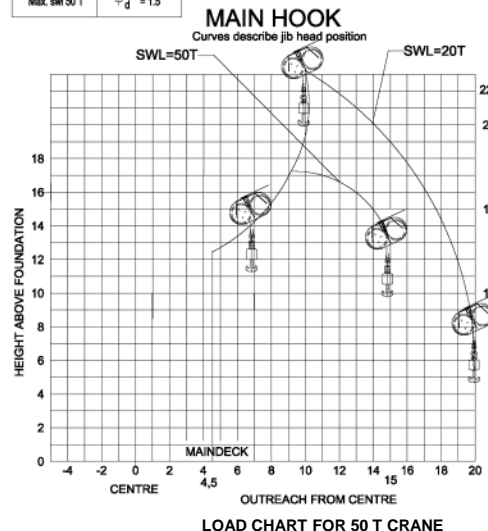
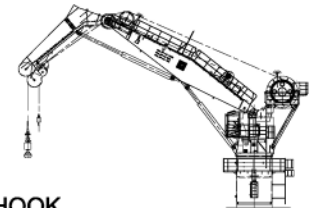
## Year built / Builder

1984 at RAUMA REPOLA OY, Finland  
 Rebuilt in 2001, Modified in 2008.

TEREX® (BOOM LENGTH - 39.6 METRS.)			
RADIUS (MTRS)	BOOM ANGLE (DEG)	360 DEG.RATING (TONNES)	FROM BOOM POINT TO BOOM FOOT (MTRS)
7.6	82.3	95.70 *	39.3
8.0	81.7	90.90 *	39.2
9.0	80.2	81.20 *	39.0
10.0	78.7	72.90 *	38.9
11.0	77.3	66.00 *	38.6
12.0	75.8	60.30 *	38.4
13.0	74.3	55.50 *	38.1
14.0	72.8	51.30 *	37.8
15.0	71.2	47.30 *	37.5
16.0	69.7	44.20 *	37.2
17.0	68.1	41.40 *	36.8
18.0	66.6	38.70 *	36.4
19.0	65.0	36.30 *	35.9
20.0	63.3	34.30 *	35.4
21.0	61.7	32.30 *	34.9
22.0	60.0	30.60 *	34.3
23.0	58.3	29.10 *	33.7
24.0	56.6	27.60 *	33.1
25.0	54.8	26.30 *	32.4
26.0	53.0	25.00 *	31.7
27.0	51.2	23.90 *	30.9
28.0	49.3	22.80 *	30.0
29.0	47.3	21.80 *	29.1
30.0	45.3	20.90 *	28.2
31.0	43.2	20.00 *	27.1
32.0	41.0	19.10 *	26.0
33.0	38.7	18.40 *	24.8
34.0	36.3	17.60 *	23.5
35.0	33.7	17.00 *	22.0
36.0	31.0	16.40 *	20.4
37.0	28.0	15.70 *	18.6
38.0	24.6	15.10 *	16.5
39.0	20.8	14.60 *	14.1

LOAD CHART FOR 100 T CRANE

<b>N.O.F</b> Number of fall	<b>DYN</b> Dynamic mode
<b>1</b> Max. swl 50 T	<b>1</b> $\psi_d = 1.5$



CONTACTS

**Seamec Limited**

A-901-905, 9<sup>th</sup> Floor, 215 Atrium,  
Andheri-Kurla Road, Andheri East,  
Mumbai – 400 093.

India

Phone: + 91 22 66941800

Fax: + 91 22 66941818

Email: [contact@seamec.in](mailto:contact@seamec.in)

<http://www.seamec.in>



This document is the property of Seamec and is not intended to be a binding contractual document.  
Any information contained herein shall not result in any binding obligation on the part of Seamec,  
Or any of its affiliates, and is provided for information purposes only.

