

Our Fleet



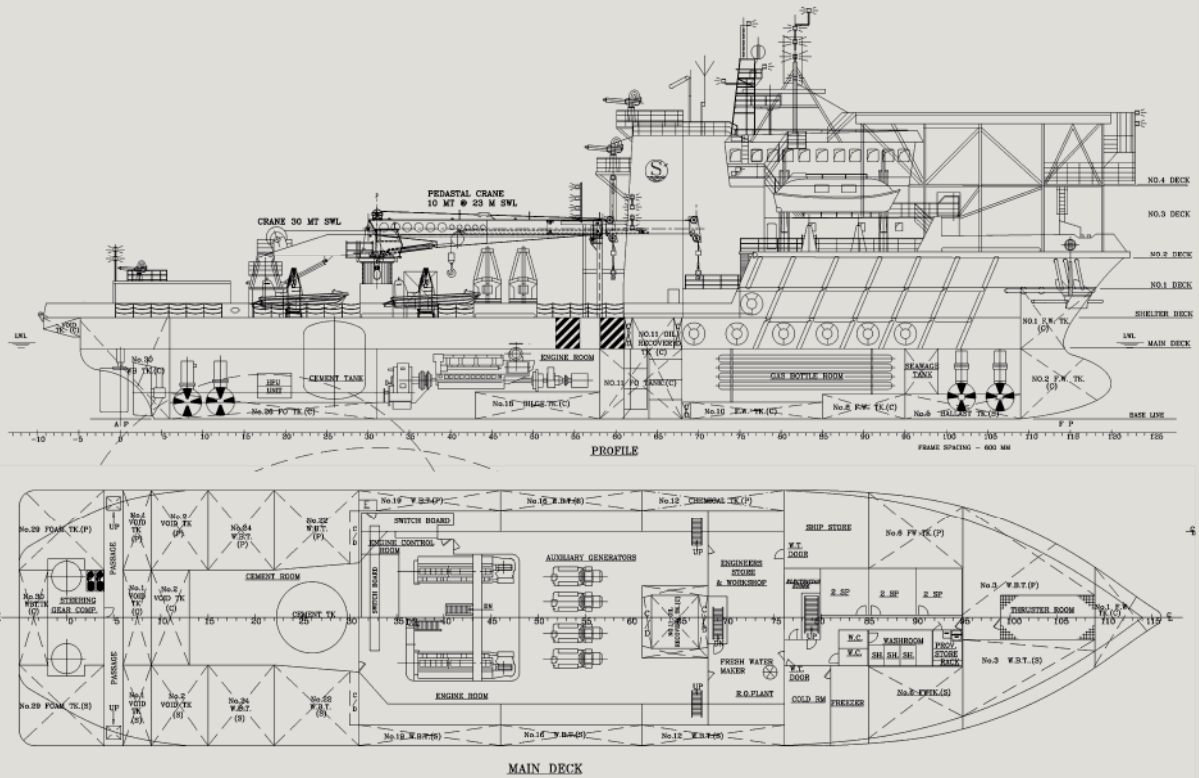
SEAMEC I

[A highly advanced Multi support vessel



SEAMEC LIMITED

MMG™



The Seamec I is a purpose designed and built multi support vessel suitable for demanding markets, capable of working throughout the year in virtually all sea and weather conditions.

Capabilities

Built in 1983, the vessel is designed, constructed and certified for worldwide operations. The Seamec I provides services, which include Air dive support for offshore constructions and NDT / Pipeline inspection, Subsea constructions and Maintenance operations, ROV operations.

Vessel conducts :

- Air Diving operations
- Fire Fighting and Safety coverage to the Oil field installations
- Duties of Emergency response and rescue vessel.
- Anti-pollution control

Communication

◦GMDSS Compliant equipment available onboard.

Dynamic Positioning System

The vessel is fitted with a fully redundant Kongsberg K-Pos Dynamic Positioning system. There is a HiPAP 350 hydroacoustic transducers, two satellite positioning systems (DGPS), and two vertical taut wire reference systems (MK II & MK 15).

Accommodation

Modern accommodation is Certified for 85 persons, comprising:
 12 x Single bed cabins
 17 x Double bed cabins
 03 x Three bed cabins
 03 x Four bed cabins
 03 x Six bed cabins
 Additional 02 bed Hospital.

Cranage

The vessel is fitted with 30 T crane on the port side and 10 T crane on the starboard side on the shelter deck.

Water Maker

Reverse Osmosis. Avg. Potable water production as per:
 17 T/day at 30°C & 24 T/day at 25°C
 (Make SLC, France)

Specifications

Principle dimensions

Length overall.....78.85 m
 Length Between pp.....68.40 m
 Breadth Moulded.....16.20 m

Operating draft

Summer draft.....5.510m

Dead weight.....1852.61 tonnes

Tonnage

Gross Tonnage.....2685tonnes
 Net Tonnage.....806tonnes

Cranage

Main lifting facilities

- 10 T at 23 m on the stbd side

Additional lifting facilities

- 30 / 15 T at 7.5 / 15 m on the Port side.

Deck space

588 sq.m

Deck load

5 tons/sq.m

Max overall

2,950T

Capacities

- Marine diesel oil 635.47 m³
- Fresh water 780.33 m³
- Ballast water 1572.96m³

DP system

Kongsberg K-Pos

Reference Systems

- 2 x Tautwire (MK II & MK 15)
- 1 x HPR (Hi PAP 350)
- 2 x DGPS (1 SEATEX X 1 GLONASS)
(Signals by FUGRO)

Environmental Regulatory

Number 99/91/86

Power Plant

- 2 x Stamford, MHC-73462, each 1564.8 kW, 1882 Amps, 1956 KVA, 3 Phase, 600V, 60 Hz
- 2 x Mercedes Benz, OM 404A each 312 kW, 3 Phase, 600V, 60 Hz
- 2 x Volvo Penta, D12-EMG, each 350.4 kW, 3 Phase, 600v, 60 Hz

Total generated power 4454.4 kW

Propulsion

Main

- 2 x Wichmann CPG system (SNO 245 V2 & SNO 246 V2)

Bow

- 2 x Brunvoll Tunnel Type (SPR-VP-800 9/36, 600kW)

Stern

- 2 X Brunvoll Tunnel Type (SPR-VP-800 9/36,600kW & SPX-VP800 11/34,445kW)

Endurance

Fuel consumption (typical)

- In port 1.75 m³
- Transit 16 m³
- DP approx 12 m³

Vessel speed

- Maximum speed 12 knots
- Economic Transit Speed 8 knots

Fire Fighting

Fi-Fi Monitors

- 04 Nos. 1800 m³/hr each. FFS

Foam Monitors

- 02 Nos. 300 m³/hr each. Kvaerner Eureka.

Helideck

Super Puma / Bell 212 or similar

Air Diving system

- Air D.D.C (Containerized) 1
- No of LARS 2
- HP Air Compressor 1
- LP Air Compressor 1
- Gas storage 50 m³

Flag

Indian

Call sign

VTTP

Classification

DNV - +1A1 ICE-C Supply Vessel Fire Fighter I and II SF HELDK E0 DYNPOS-AUTR

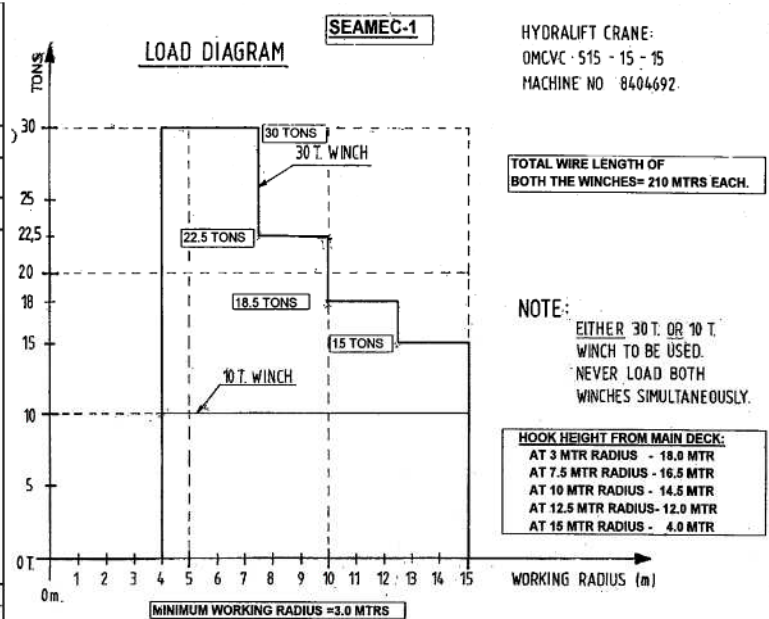
IRS - SUL, Supply Vessel, STS, Ha IY SYJ, DP (2), AGNI-I, AGNI-II, Helideck

Year built / Builder

1983 at Langsten Slip og Baatbyggeri A/s, 6393, Tomrefjord, Norway.

NORTH PACIFIC CRANE COMPANY LLC							
AS RIGGED STATIC / DYNAMIC / PERSONNEL LOAD CAPACITY CHART							
FOR SHIPBOARD / OFFSHORE / PERSONNEL USE							
ALASKA MARINE CRANE MODEL: MCT-9576							
BOOM RETRACTED (m) 17.0				BOOM EXTENDED (m) 23.2			
LOAD RADIUS (Meter)	BOOM ANGLE (Degrees)	STATIC / DYNAMIC LOAD (mTon)	PERSONNEL LOAD	LOAD RADIUS (Meter)	BOOM ANGLE (Degrees)	STATIC / DYNAMIC LOAD (mTon)	PERSONNEL LOAD
4.5	75.0	10.0	4.0	4.5	79.0	10.0	4.0
6.0	70.5			6.0	76.0		
7.5	65.0			7.5	72.0		
9.0	59.5			9.0	68.0		
10.5	53.5			10.5	64.0		
12.0	47.0			12.0	60.0		
13.5	39.5			13.5	55.5		
15.0	30.0			15.0	51.0		
16.5	16.5			16.5	46.0		
17.0	0.0			18.0	40.5		
				19.5	34.0		
				21.0	26.5		
				22.5	15.5		
				23.2	0.0		

10 Ton Crane Load Chart



30 Ton Crane Load Chart

CONTACTS

Seamec Limited

A-901-905, 9th Floor, 215 Atrium,
Andheri-Kurla Road, Andheri East,
Mumbai – 400 093.

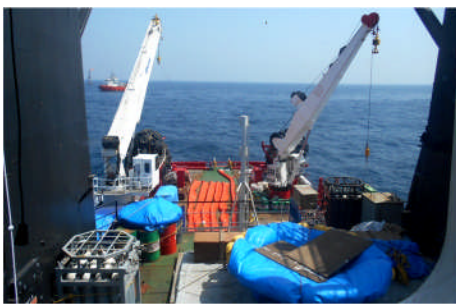
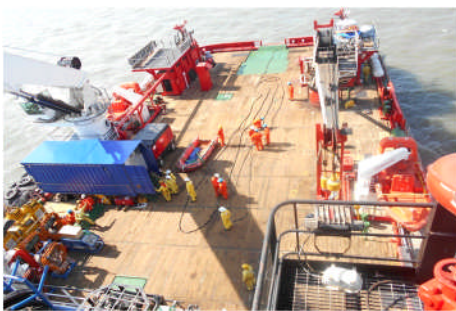
India

Phone: + 91 22 66941800

Fax: + 91 22 66941818

Email: contact@seamec.in

<http://www.seamec.in>



This document is the property of Seamec and is not intended to be a binding contractual document.
Any information contained herein shall not result in any binding obligation on the part of Seamec,
Or any of its affiliates, and is provided for information purposes only.



MMG™